



World Guide Rail Alliance

USA/Canada

Monteferro America
Phone (204) 222-0247
1.866.222.0247
Fax (204) 224-4275
E-mail: sales@monteferroamerica.com

Italy

Monteferro S.p.A.
Phone: ++39-0332-798879
Fax: ++39-0332-971016
E-mail: customer.service@monteferro.it

Brazil

Monteferro América Latina L.T.D.A.
Phone: ++55-11-41482575
Fax: ++55-11-41482575
E-mail: monteferro@monteferro.com.br

Czech Republic

Monteferro Hradek A.S.
Phone: ++420-371-725467
Fax: ++420-371-725477
E-mail: customer.service@monteferro.cz

China

Hebei Monteferro Guide Rails Co., L.T.D.
Phone: ++86-317-2029504
Fax: ++86-317-2026327
E-mail: montefer@heinfo.net

Hong Kong

Monteferro Pacific Trading Ltd.
Phone: ++852-25214225
Fax: ++852-25261393
E-mail: customer.service@monteferro.com.hk

Spain

Monteferro Spain
Phone: +34 945 292260
Fax: +34 945 292264



s p e c i f i c a t i o n s



Accessories

ISO 9001-2000 certified

Monteferro America

Printed in Canada
112004

Accessories

Monteferro offers many variations of product and packaging to simplify your guide rail installation.

Clip Kits

Monteferro CLIP KITS are available in single assemblies, 2-pack and 4-pack kits. Grade 5 hardware (bolt, nut, washer, spring washer) are standard in each kit. Custom packs and plated hardware are available. Clip only sales are also available.

Rail Size	Clip Type	Bolt Size (inches)	Single Assembly Weight (lbs.)
T89	Forged	1/2 x 1 1/2	0.4
T89	Sliding	1/2 x 1 1/2	0.4
T127-1	Sliding	5/8 x 2	0.8
T127-2, T140-1	Forged	5/8 x 2	0.9
T127-2, T140-1	Sliding	5/8 x 2	0.8
T140-2	Forged	3/4 x 2 1/2	1.5
T140-2	Sliding	3/4 x 2 1/2	1.3
T140-3	Forged	3/4 x 2 1/2	1.8



Anchor Bolt Kits

Monteferro ANCHOR BOLTS are available in single assemblies, 2-pack and 4-pack kits. Each kit comes complete with standard hardware (nut, washer). Custom packs and plated hardware are available. Technical data is available, please inquire.

Diameter	Thread Length	Minimum Embedment	Overall Length
1/4	3/4	1 1/8	1 3/4
1/4	3/4	1 1/8	2 1/4
1/4	3/4	1 1/8	3 1/4
3/8	7/8	1 5/8	2 1/4
3/8	7/8	1 5/8	3
3/8	1 1/8	1 5/8	3 3/4
3/8	1.125	1 5/8	5
1/2	1 1/4	2 1/4	2 3/4
1/2	1 1/4	2 1/4	3 3/4
1/2	1 1/4	2 1/4	4 1/2
1/2	1.25	2 1/4	5 1/2
5/8	1 1/2	2 3/4	3 3/4
5/8	1 1/2	2 3/4	4 3/4
5/8	1 1/2	2 3/4	6
5/8	3.5	2 3/4	8 1/2
3/4	1 1/2	3 1/4	4 3/4
3/4	1 1/2	3 1/4	5 1/2
3/4	1.5	3 1/4	7

Dimensions in inches



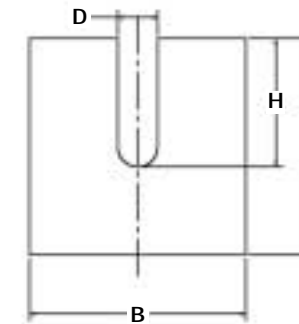
Shim Kits

Monteferro SHIM KITS come in standard packs (one thickness per pack) or a mix-pack containing a variety of all three thicknesses. Custom shims are available. Plated shims are also available.

MF Type SINGLE

Rail Size	L	B	D	H
T89	2	2	9/16	1.28
T127-1, T127-2, T140-1	3	3	11/16	1.875
T140-2	4	4	13/16	2 1/2

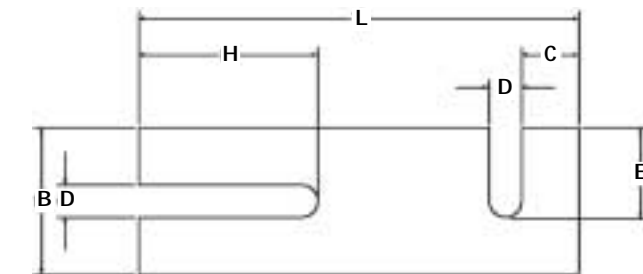
Dimensions in inches



MF Type DOUBLE

Rail Size	L	B	D	E	C	H
T89	6	2	9/16	1.28	0.5	1 1/8
T127-1, T127-2, T140-1	9	3	11/16	1.875	0.75	2
T140-2	11	4	13/16	2 1/2	0.75	3

Dimensions in inches



MF Standard Ordering Kits

Kit	Shim Quantities		
	16 ga (.0635")	22 ga (.0336")	28 ga (.0187")
A	12	-	-
B	-	12	-
C	-	-	24
D	6	6	6